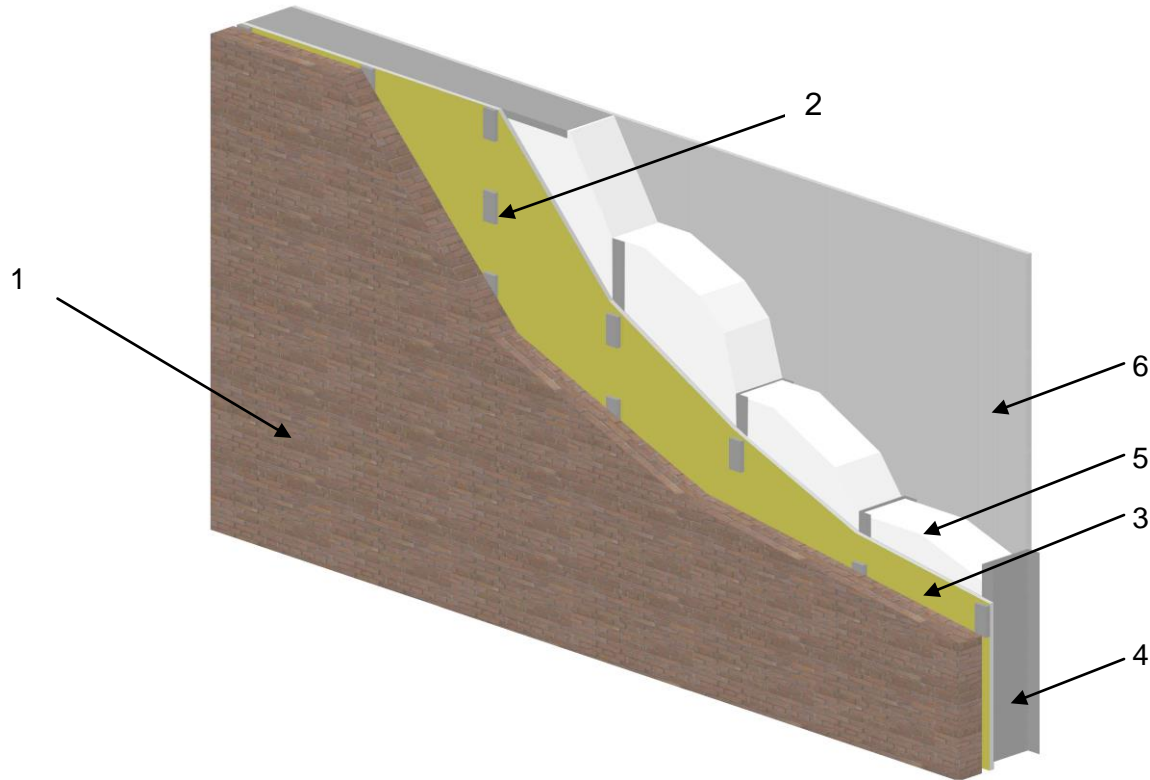


**QAI Design B1056-1a – Icynene Inc. – ASTM E119/CAN/ULC S101
 1 Hour Non-Load Bearing Fire Resistance Rated Wall Assembly**



No.	COMPONENT	DESCRIPTION
1	Brick Finish	Type: Brick that meet the requirements of ASTM C67 & CSA A82 and applied as per ASTM C216
		Mortar: Type S Mortar meeting the requirements of ASTM C270 and CSA A179
		Air Gap: Nominal 1 inch (25 mm) between the brick and the exterior sheathing (Item 3)
2	Brick Anchors	Type: Anchors meeting the requirements of ASTM E488 or CAN/CSA-A370
		Fasteners: Secured through the exterior sheathing (Item 3) into the steel stud (Item 4) with #8 x 1-5/8 inch (41 mm) long self-taping screws
3	Exterior Sheathing	Sheathing Type: Must meet the requirements of ASTM C1777 "Glass Mat Gypsum Substrate"
		Minimum Thickness: 1/2 inch (12 mm)
		Vertical Joint Offset: Vertical joints must have a minimum 16 inches (400 mm) offset from the interior gypsum board (Item 6)
		Horizontal Joint Offset: Horizontal joints must have a minimum 24 inches (610 mm) offset from the interior gypsum board (Item 6)
		Minimum Fastener Size: #6 x 1-1/4 inch (32 mm) long self-taping zinc plated drywall screws
Maximum Fastener Spacing: 8 inches (200 mm) on center around the perimeter and the field		
4	Steel Stud	Minimum Gauge: 18 ga galvanized steel stud meeting the requirements of ASTM A370 or CAN/CSA-S136
		Minimum Size: 6 inch (150 mm) [Nominal]
		Maximum Spacing: 16 inches (400 mm) on center
		Installation: As per ASTM C955
5	Insulation	Certified Company: Icynene, Inc.
		Certified Product: Polyurethane Foam Insulation
		Certified Model(s): Classic (LD-C-50™), Classic Max (LD-C-50™ V2), Classic Plus (LD-C-70™), Classic ECO (LD-R-50™)
		Application: Spray applied
		Maximum Thickness: 6 inches (150 mm)
		Maximum Density: 0.55 lbs/ft ³ (9 kg/m ³) [Classic, Classic Max & Classic ECO] 0.77 lbs/ft ³ (12 kg/m ³) [ClassicPlus]
Details: Applied between the steel stud (Item 4) cavities. Trim any excess insulation (trim insulation flush with the front edge of the steel stud) (Item 4)		
6	Gypsum Board	Type: Type X Gypsum Board meeting the requirements of ASTM C1396 or CAN/CSA-A82.27
		Minimum Thickness: 5/8 inch (16 mm)
		Minimum Fastener Size: #6 x 1-1/4" (32 mm) long self-taping zinc plated drywall screws
		Maximum Fastener Spacing: 8 inches (200 mm) on center around the perimeter and 12 inches (305 mm) on center in the field
		Finish: Joints to be tapped and mudded, and fastener heads to be mudded to a level 2 finish as per ASTM C840 or CSA A82.31-M & Gypsum Association GA-216/214