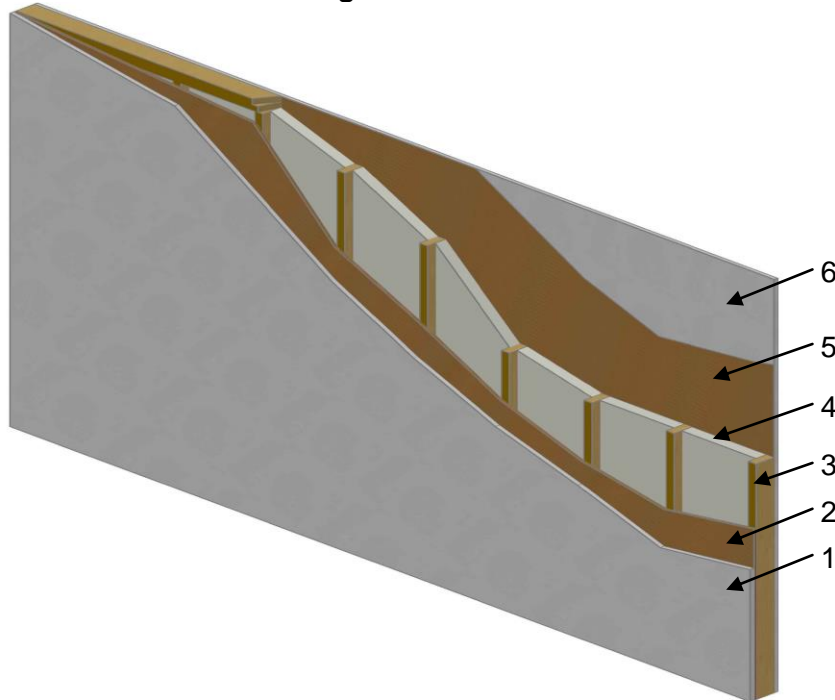




**QAI Design B1056-1c – Icynene Inc. – ASTM E119/CAN/ULC S101  
1 Hour Restricted\* Load Bearing Fire Resistance Rated Wall Assembly**



No.	COMPONENT	DESCRIPTION	
1	<b>Exterior Sheathing</b>	Sheathing Type:	Type X gypsum wallboard complying with ASTM C1396 and CAN/CSA-A82.27
		Minimum Thickness:	5/8 inch (16 mm)
		Minimum Fastener Size:	#6 x 1-1/4" (32 mm) long self-taping zinc plated drywall screws
		Maximum Fastener Spacing:	8 inches (200 mm) on center around the perimeter and 12 inches (305 mm) on center in the field
		Finish:	Joints to be taped and mudded, and fastener heads to be mudded as per CSA A82.31-M or ASTM C840 (Level 2)
2	<b>Exterior Sheathing</b>	Sheathing Type:	Cascades Inc. - wood fiber utility board (0.72 lbs/ft <sup>2</sup> [0.03kg/m <sup>2</sup> ])
		Minimum Thickness:	1/2 inch (12 mm)
		Minimum Fastener Size:	#6 x 1-1/4" (32 mm) long self-taping zinc plated drywall screws
		Maximum Fastener Spacing:	8 inches (200 mm) on center around the perimeter and 12 inches (305 mm) on center in the field
		Finish:	Joints to be taped and mudded, and fastener heads to be mudded as per CSA A82.31-M or ASTM C840 (Level 2)
3	<b>Wood Stud</b>	Minimum Stud Size:	2 inch x 4 inch (38mm x 89 mm)
		Maximum Stud Spaced:	24 inch (610 mm) on center
4	<b>Insulation</b>	Certified Company:	Icynene, Inc.
		Certified Product:	Polyurethane Foam Insulation
		Certified Model:	Classic (LD-C-50™), Classic Max (LD-C-50™ V2), Classic Plus (LD-C-70™), Classic ECO (LD-R-50™)
		Application:	Spray applied
		Maximum Thickness:	2-1/4 inches (50 mm)
		Maximum Density:	0.55 lbs/ft <sup>3</sup> (8 kg/m <sup>3</sup> ) [Classic, Classic Max & Classic ECO] 0.77 lbs/ft <sup>3</sup> (11 kg/m <sup>3</sup> ) [ClassicPlus]
		Details:	Applied between the wood stud (Item 3) cavities. Trim any excess insulation (flush with the edge of the wood stud (Item 3))
5	<b>Interior Sheathing</b>	Sheathing Type:	Cascades Inc. - wood fiber utility board (0.72 lbs/ft <sup>2</sup> [0.03kg/m <sup>2</sup> ])
		Minimum Thickness:	1/2 inch (12 mm)
		Minimum Fastener Size:	#6 x 1-1/4" (32 mm) long self-taping zinc plated drywall screws
		Maximum Fastener Spacing:	8 inches (200 mm) on center around the perimeter and 12 inches (305 mm) on center in the field
		Finish:	Joints to be taped and mudded, and fastener heads to be mudded as per CSA A82.31-M or ASTM C840 (Level 2)
6	<b>Interior Sheathing</b>	Sheathing Type:	Type X gypsum wallboard complying with ASTM C1396 and CAN/CSA-A82.27
		Minimum Thickness:	5/8 inch (16 mm)
		Minimum Fastener Size:	#6 x 1-1/4" (32 mm) long self-taping zinc plated drywall screws
		Maximum Fastener Spacing:	8 inches (200 mm) on center around the perimeter and 12 inches (305 mm) on center in the field
		Finish:	Joints to be taped and mudded, and fastener heads to be mudded as per CSA A82.31-M or ASTM C840 (Level 2)

\*Restricted-Load Bearing - Load rating for this assembly was 1,805 pounds per stud