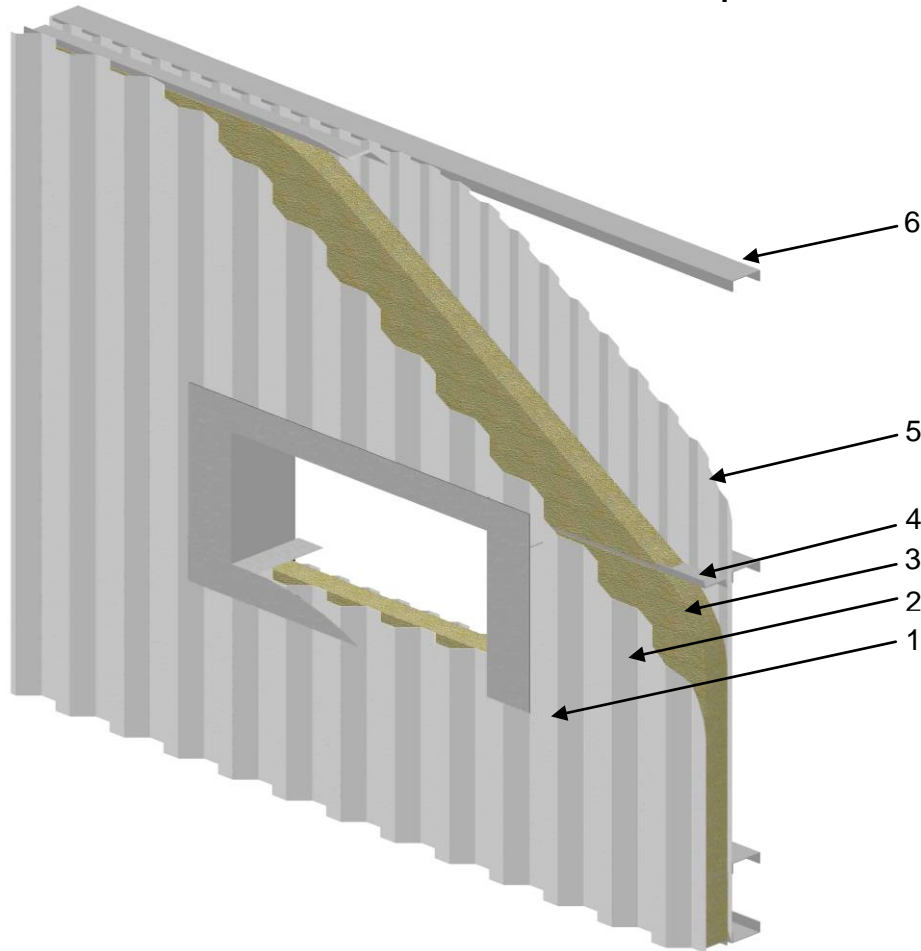




**QAI Design B1071-1 – Stabilit America, Inc. (dba Resolite) - Resolite Panel Assembly
CAN/ULC S134 - Exterior Rain Screen Assembly for Non-Combustible Construction
Maximum Heat Flux $\leq 35 \text{ kW/m}^2$ @ 3.5 m / Maximum Flame Spread $\leq 5 \text{ m}$**



No.	COMPONENT	DESCRIPTION	
1	Flashing	As per Installation requirements	
2	Exterior Cladding Panel	Certified Manufacturer:	Stabilit America
		Certified Panel:	Resolite Fiberglass Reinforced Plastic (FRP) Panel
		Panel Weight:	Maximum 5.2 kg/m^2 (17 oz./ft ²)
		Fasteners:	Minimum #14 x 51 mm (2 inch) Self-Taping Hex Screws with neoprene gasketed stainless steel washers spaced per wind load requirements
		Horizontal Overlap:	Maximum 83 mm (3-1/4 inch) overlap with SB-2 Grommet fasteners vertically every 457 mm (18 inch) o.c.
	Vertical Overlap:	Maximum 102 mm (4 inch) panel overlap	
3	Insulation	Product:	Minimum 76 mm (3 inch) thick mineral wool insulation conforming to ASTM C612
		Minimum Density:	64 kg/m^3 (4 lbs/ft ³)
		Installation:	Friction fitted between the horizontal "Z" girts (item 4)
4	Rail	Type:	Steel "Z" bar
		Gauge:	18 ga
		Size:	Depth equivalent to the insulation thickness and sized as per wind load requirements
		Rail Spacing:	Maximum 1525 mm (60 inch) spacing or as per wind load requirements
	Fastening:	Fastened along the exterior of the interior cladding (item 2) and into the C-Channel (Item 6) with minimum #14 x 51 mm (2 inch) Self-Taping Hex Screws with stainless steel washers having integral bonded neoprene gaskets spaced per wind load requirements	
5	Interior Liner Panel	Certified Manufacturer:	Stabilit America
		Certified Panel:	Resolite Fiberglass Reinforced Plastic (FRP) Panel
		Panel Weight:	Maximum 5.2 kg/m^2 (17 oz./ft ²)
		Fasteners:	¼-14 x 25 mm (1 inch) Type B (3/8 HH) 304 SS fasteners with neoprene gasketed stainless steel washers spaced per wind load requirements
		Horizontal Overlap:	76 mm (3 inch) panel overlap
	Vertical Overlap:	102 mm (4 inch) panel overlap	
6	Rail	Type:	Steel C-channel
		Gauge:	18 ga
		Details:	Size, spacing and fasteners as per wind load requirements