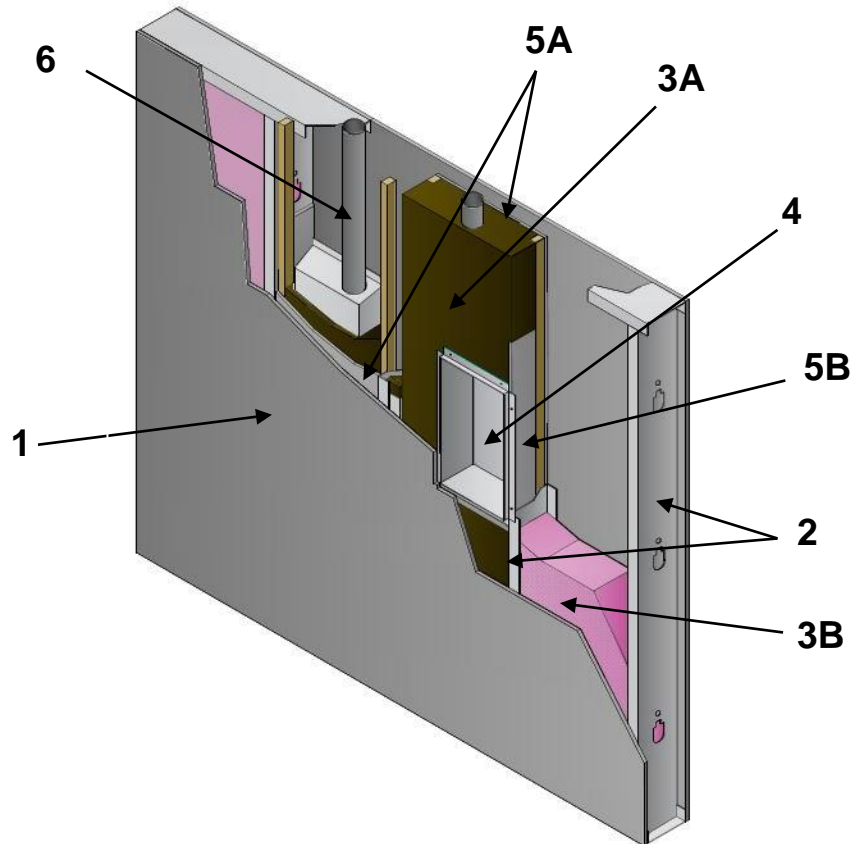


**QAI Listing B1072-1F Construction  
 Dryer Vent Boxes  
 CAN/ULC S115, ASTM E814  
 1 Hour Membrane Penetration Assembly  
 Load Bearing**



No.	COMPONENT	DESCRIPTION	
1	Gypsum Board Sheathing	Type:	Type X gypsum wallboard complying with ASTM C1396 and labeled by an approved agency.
		Thickness:	Single layer of 5/8 in. (16 mm) on each face of the wall.
		Application:	Sheathing is to be fastened to studs with #6 x 1-1/4 in. (32 mm) long self-drilling drywall screws spaced at 8 in. (203 mm) on center. Joints to be taped and mudded, and fastener heads to be mudded.
2	Wall Studs	Stud Type:	Minimum 1-1/4 x 6 in. (32 x 152 mm) steel.
		Gauge:	Minimum 25 Gauge.
		Stud Spaced	Maximum 16 in. (406 mm) on center.
3A	Insulation (Dryer Vent Box Cavity)	Type:	Mineral wool thermal insulation in compliance with ASTM C612 Type II, III or IVA. ASTM C612 Type II and III mineral wool insulation must also be non-combustible as defined by ASTM E136 and CAN/ULC-S114.
		Nominal Density:	Minimum 4.0 lb/ft <sup>3</sup> (64 kg/m <sup>3</sup> ).
		Installation:	A 1 in. mineral wool board or batt shall be installed behind the dryer vent box. The remainder of the cavity shall be filled with mineral wool including between the box and the stud.

No.	COMPONENT	DESCRIPTION	
3B	Insulation (Adjacent Cavities)	Type:	Minimum R-19 fiberglass batt insulation that is classified as non-combustible as defined by ASTM E136 and CAN/ULC-S114.
		Minimum Thickness:	6 inch (152 mm).
		Installation:	Fiberglass batt must be installed in the adjacent cavities.
4	Dryer Vent Box	Certified Manufacturer:	Construction Solutions
		Certified Products:	DBX1000M 4 in. Construction Solutions dryer vent box kit. DBX1017 4.25 in. Construction Solutions dryer vent box kit. DBX1017FR4 3.5 in. Construction Solutions dryer vent box kit.
		Box Dimensions:	DBX1017 4.25 in.: 10 in. (254 mm) wide by 17 in. (432 mm) high by 4.25 in. (108 mm) deep with a 1 in. (25 mm) flange. A 4 in. (102 mm) cut out for the dryer vent on the top and 1-1/8 in. (29 mm) knockout on the top. The box is formed from 24 Gauge steel.
			DBX1017FR4 3.5 in.: 10.77 in. wide by 17.82 in. high by 4 ¼ in. deep with a 1 in. flange. A 3.157 in. cut out for the dryer vent. 1-1/8 in. knockout on the top of the box. The box is formed from 24 Gauge steel.
			DBX1000M 4 in.: 10 in. (254 mm) wide by 17 in. (432 mm) high by 3-1/2 in. (89 mm) deep with a 1-1/4 in. (32 mm) flange. A 3 x 5 in. (76 x 127 mm) oval cut out for the dryer vent on the top and 1-1/8 in. (29 mm) knockouts on the top and bottom for gas hook up. The box is formed from 22-gauge galvanized steel.
		Sealing:	PFP 4800DW Hilti FS-ONE MAX STI LC Endothermic Firestop Sealant 3M Fire Barrier Sealant CP 25WB+ WF300 Intumescent Caulking Foil Tape listed to UL 723
Installation:	The dryer vent box is fastened to the stud and sill through two holes on the side and bottom of the box using #8 x 5/8 in. (16 mm) steel stud screws. The galvanized steel dryer vent is inserted through the top of the box then caulked at the vent/box interface. The opening cut into the gypsum board shall be a maximum of 10-1/2 in. (267 mm) wide by 17-1/2 in. (445 mm) high. Only one box is permitted per stud cavity.		
5A	Gypsum Board (Back of Dryer Box Cavity)	Type:	Type X gypsum wallboard complying with ASTM C1396 and labeled by an approved agency.
		Thickness:	Single layer of 5/8 in. (16 mm) .
		Application:	The cavity containing the dryer vent box shall have a layer of type X gypsum placed behind the box. The gypsum shall be fastened to two 3/4 in. (19 mm) by 1-1/2 in. (38 mm) pieces of wood fastened to the stud with steel stud screws such that the gypsum will be flush with the 1-1/4 in. (32 mm) face of the studs prior to fastening the sheathing. The gypsum board shall be fastened with no. 6 x 1-5/8 in. (41 mm) drywall screws.
5B	Gypsum Board (Adjacent Stud of Dryer Box)	Type:	Type X gypsum wallboard complying with ASTM C1396 and labeled by an approved agency.
		Thickness:	Single layer of 5/8 in. (16 mm) .
		Application:	The adjacent stud to the dryer vent box shall have a layer of type X gypsum placed between the stud and the box. The gypsum shall extend 6 in. (152 mm) above the top of the box and fastened using six no. 6 x 1-1/4 in. (32 mm) Type S drywall screws.
6	Vent Pipe	Size:	4 in. (101 mm) round.
		Type:	26 Gauge galvanized steel.

Visit the QAI Online Listing Directory located at [www.qai.org](http://www.qai.org) for the most up to date version of this Listing and to validate that this QAI Listing is active.