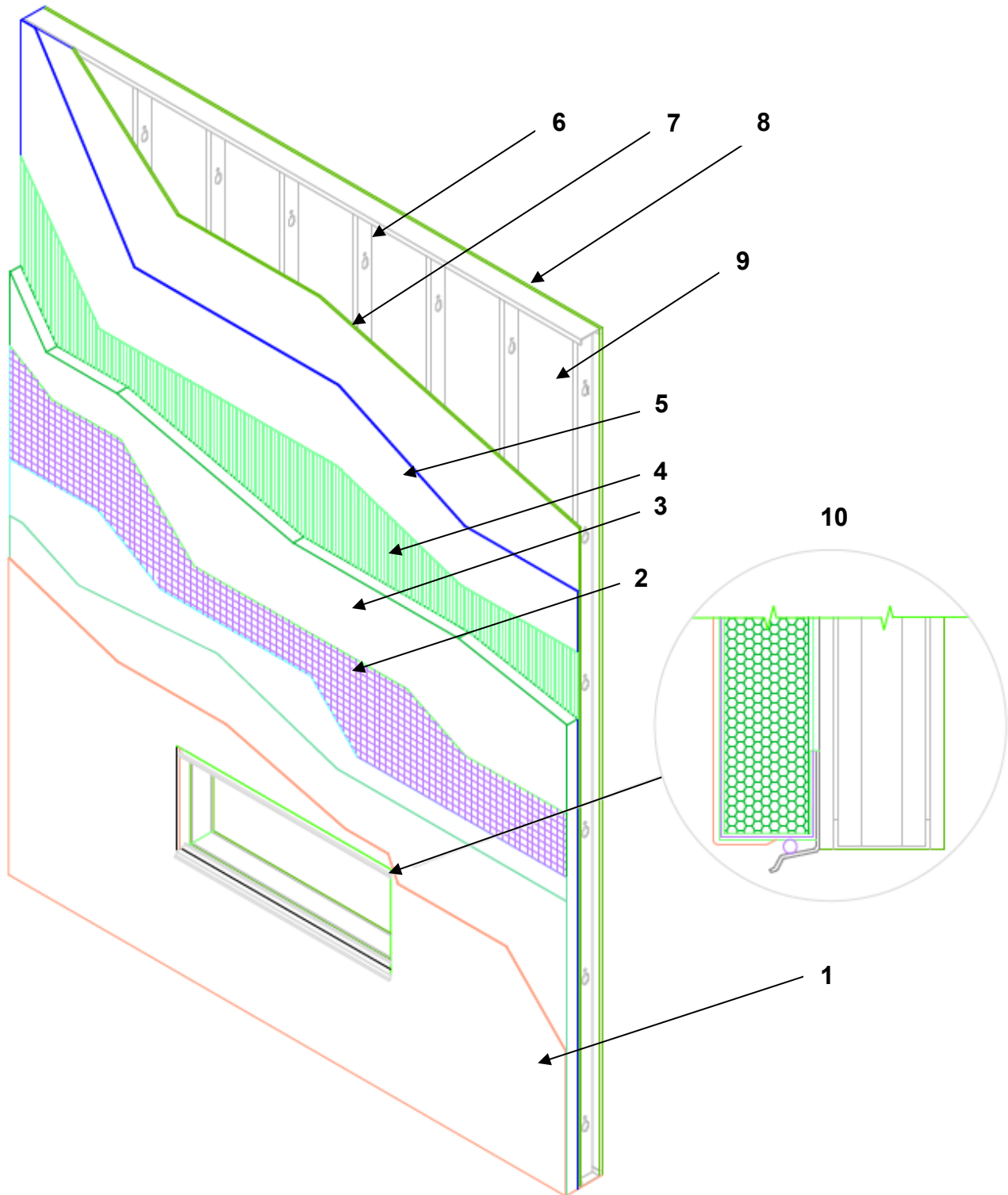


QAI Design B1039-1c – DUROCK ALFACING INTL. LTD. – Exterior Wall (NFPA 285)^{1,2}



No.	COMPONENT			DESCRIPTION					
EIFS System				InsulROCK		PUCCS			
1	Finish Coat	Certified Manufacturer:		DuROCK Alfacing International Ltd.					
		Certified Product:		DuROCK Finish					
		Primer:		With or without a water-based acrylic primer					
2	Mesh	Density:		Minimum 4.4 oz/yd ² (150 g/m ²).					
		Type:		Alkali-resistant glass-fiber mesh embedded in base coat.					
		Installation:		Back wrapping the mesh and base coat are required on all joints, openings, or perimeter terminations. Minimum 4" (100 mm) overlap on all mesh edges.					
	Base Coat	Certified Manufacturer:		DuROCK Alfacing International Ltd.					
		Certified Products:		Prep-Coat, Prep-Coat P & Prep-Coat D base coats, meets the requirements of CAN/ULC S114 Non-combustible					
		Coating Thickness:		Minimum average thickness of 80 mils (2.0 mm)					
3	Insulation	Product:		Approved and Labeled - Type I or Type II EPS flat insulation boards at thicknesses outlined below.		Approved and Labeled - Type I or Type II EPS insulation boards at thicknesses outlined below, with drainage pathways cut 3/8" (10 mm) deep in the insulation in a series of circles, 3-3/8" (86 mm) in diameter and 5/8" (16 mm) apart.			
		Density:		Type I of minimum density 0.90 lbs/ft ³ (16 kg/m ³), Maximum density: 1.15 lbs/ft ³ (19 kg/m ³) Type II of minimum density 1.35 lbs/ft ³ (23 kg/m ³), Maximum density: 1.60 lbs/ft ³ (27 kg/m ³)					
		Type:		Flame Spread Index ≤ 25, Smoke Developed Index ≤ 450, in accordance with ASTM E84 or UL 723					
		Board Size:		24" x 48" (610 mm x 1219 mm)					
		Thickness:		Type I: Maximum 5" (127 mm) Type II: Maximum 3 ½" (91 mm)					
						Assembly 1	Assembly 2	Assembly 3	
4	Adhesive/ Fastener Detail	Adhered:	Adhesives:	Polar Bear, Cement Bear, Prep-Coat or Prep-Coat D		Polar Bear	Cement Bear, Prep-Coat or Prep-Coat D	Not Used	
			Application:	The adhesive is applied with a 3/8" (9.5mm) notched trowel in vertical ribbons, held at a 30° angle		The adhesive is applied with a 3/8" (9.5mm) notched trowel in vertical ribbons, held at a 30° angle or a continuous layer over the substrate with a minimum thickness of 40 mils (1.0 mm)			
		Mechanically fastened:		Insulation boards fastened with corrosion resistant fasteners with low-profile HDPP washers spaced 400 mm (16") o.c. horizontally and 300 mm (12") o.c vertically, drilled and screwed with sufficient penetration to provide appropriate anchorage (see item 5).					
5	Weather Resistive Barrier	Coating Product:		FRI Bear, Polar Bear, Cement Bear, Vapour Block or Roller Bear		FRI Bear, Polar Bear, Cement Bear, Vapour Block or Roller Bear		Not used	
		Membrane Product:		Not Used		Not Used		Soprema - SOPRASEAL STICK 1100T	
		Installation:		Coatings applied to substrate with a flat trowel: FRI Bear: Minimum thickness of 10 mils (0.28 mm) per coat Polar Bear: Minimum wet thickness of 60 mils (1.5 mm) per coat. Cement Bear: Minimum wet thickness of 50 mils (1.25 mm) per coat. Vapour Block: Minimum wet thickness of 32 mils (0.80 mm) per coat. Coatings applied to substrate with a roller: Roller Bear: Minimum thickness of 10 mils (0.28 mm) per coat					Applied directly to the substrate
		Flashing:		DuROCK Uni-Track or Uni-Flash (PolyVinyl Chloride (PVC) extrusions) may be either embedded into the wet DuROCK Air/Moisture Barrier appropriate for the substrate or it may be mechanically fastened to the substrate with corrosion-resistant screws.					
6	Base Wall			Base Wall 1: Brick, Masonry, Monolithic Concrete Walls Base Wall 2: Steel Studs at maximum 24 inches (410 mm) spacing, minimum 20-gauge of 3-5/8-inches depth.					
7	Exterior Sheathing (Base Wall 2 Requirement)			1. None (for use with Base Wall 1 from Item 6) 2. Minimum 1/2-inch Type X complying with ASTM C1177 or ASTM C1396, listed and labeled by an independent third-party accredited to ISO 17065.					
8	Interior Finish (Base Wall 2 Requirement)			1. 5/8-inch (16 mm) Type X gypsum board, listed and labeled compliant to ASTM C1396 by an independent third-party accredited to ISO 17065, finished in accordance with the applicable code. Joints and fastener locations to have a minimum Level 2 finish as per ASTM C840.					
9	Stud Cavity Insulation (Optional - Base Wall 2 Requirement)			1. None. 2. Non-combustible insulation batt compliant with ASTM E136 (must fille cavity where no exterior sheathing is present). 3. Non-combustible insulation batt compliant with ASTM C665 (any thickness).					
10	Window Opening			At Header: - Wrapped using approved mesh-reinforced base coat system. - Encapsulate exposed edges, back-wrapping min. 100 mm (4") behind insulation, 50 mm (2") beyond any self-adhered membrane.					
				Window Flashing: - See Flashing Detail above.					

- 1: Exterior wall are approved for use in load-bearing and non-load bearing applications
2: Resistance to gravity loads, wind resistance and seismic considerations are outside the scope of this report.