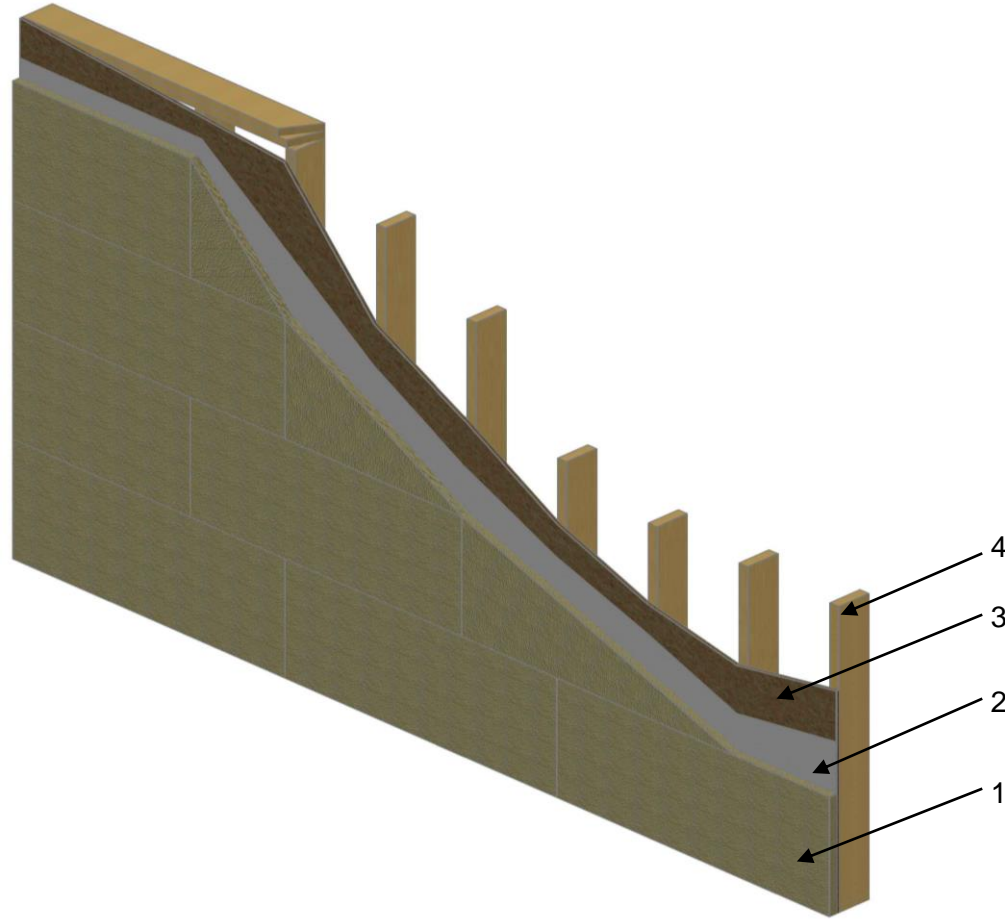


**QAI Design B1067-1d - ROCKWOOL COMFORTBOARD™ 80 / COMFORTBOARD™ 110
 NBC 3.1.5.12 – 4(d) (CAN/ULC-S101) Non-Load Bearing Fire-Resistance-Rated Construction***



No.	COMPONENT	DESCRIPTION	
1	Insulation Board	Certified Manufacturer:	ROCKWOOL
		Certified Product Name:	COMFORTBOARD™ 80 / COMFORTBOARD™ 110
		Minimum Thickness:	1-1/4 in (32 mm)
		Minimum Density:	8.0 lb/ft ³ (128 kg/m ³) ¹ / 11.0 lb/ft ³ (176 kg/m ³) ²
		Fastening Detail:	Fastened to the OSB using no. 8 by 2-1/2 inch wood screws with ¼ inch x 1-1/2 inch fender washers, they were used at the following locations. At each stud location fasteners were placed 4 inch (100 mm) and 12 inch (300 mm) from the top and bottom of the board. At vertical joint locations, two fasteners were placed between the two boards evenly spaced.
2	Building Wrap	Type:	Tyvek HomeWrap or any approved exterior building wrap stapled to the exterior sheathing
3	Exterior Sheathing	Sheathing Type:	OSB exterior sheathing
		Minimum Thickness:	3/8 inch (9.5 mm)
		Fastening:	OSB sheathing was fastened to the wood studs using 6d common nails spaced 12 inch (300 mm) on center (OC) in the field and 6 inch (150 mm) OC on the perimeter
4	Studs	Stud Type:	Wood or Steel
		Stud Spaced	Minimum 16 inch (400 mm) on center

Note: 1 designates properties for ROCKWOOL COMFORTBOARD™ 80, 2 designates properties for ROCKWOOL COMFORTBOARD™ 110

* 20 min Temperature Rise and 40 min Remain-in-place Rating