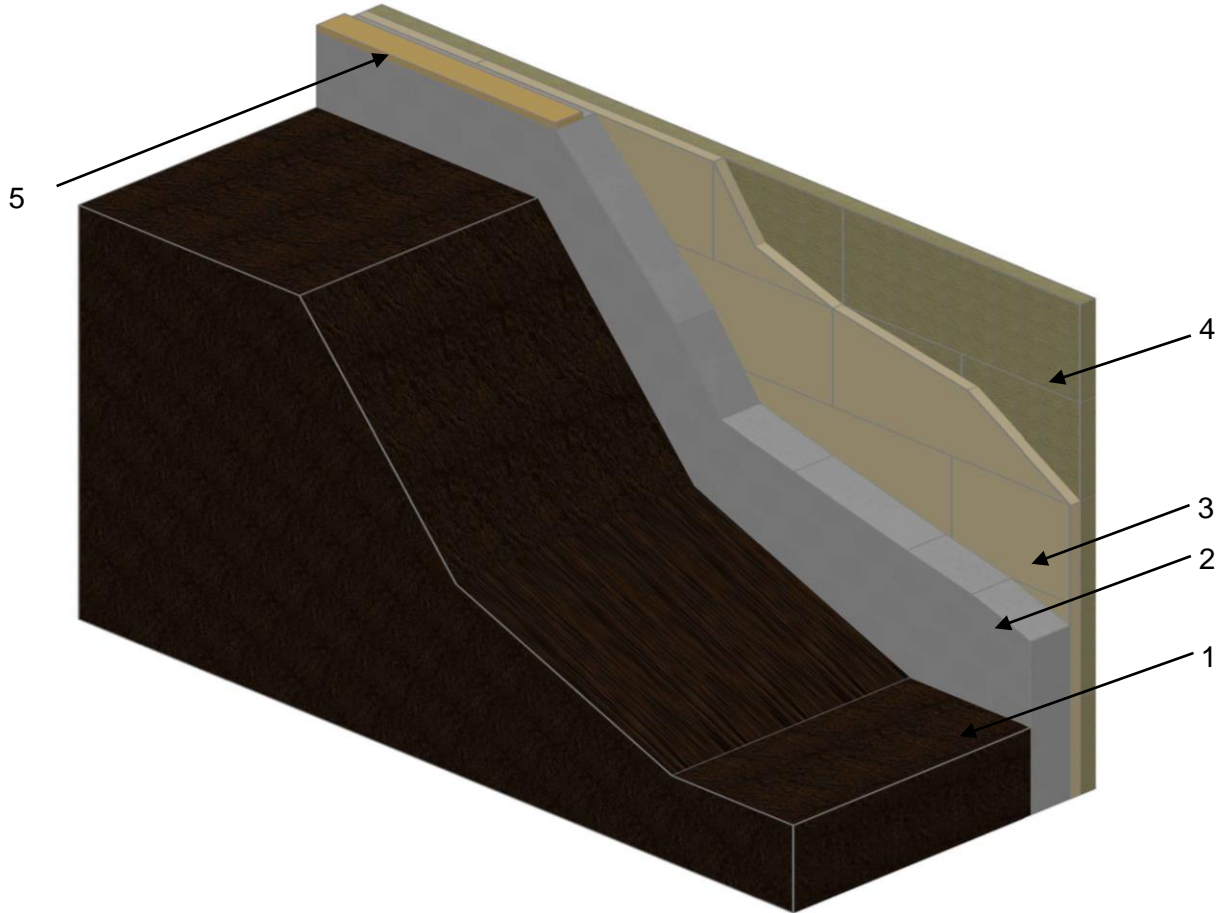




QAI Design B1067-1f –ROCKWOOL COMFORTBOARD™ 80 / COMFORTBOARD™ 110 - CAN/ULC-S124 Classification A & B protective covering for foamed insulation



No.	COMPONENT	DESCRIPTION
1	Soil	Backfill Soil
2	Concrete Foundation Wall	Typical Below Grade Foundation Wall
3	Foamed Insulation	Type: Foamed Plastic
		Maximum R-Value: 7.5/inch
4	Protective Covering of Foam Insulation	Certified Manufacturer: ROCKWOOL
		Certified Product Name: COMFORTBOARD™ 80 / COMFORTBOARD™ 110
		Assembly Class: Classification A Classification B
		Overall Thickness: 3 inch (76 mm) 2 inch (50 mm)
		Layers: Two layers of 1-1/2 inch (38 mm) thick or One Layer of 3 inch (76 mm) One layer of 2 inch (50 mm) thick
		Minimum Density: 8.0 lb/ft ³ (128 kg/m ³) ¹ / 11.0 lb/ft ³ (176 kg/m ³) ²
Installation:	Apply mechanically attached impaling pins to the concrete wall. A minimum of 5 impaling pins per board, installed at the center of the board and in the corners (3" in for either edge). Apply foam plastic insulation. Insulation boards applied over foam plastic insulation and then self-locking washers placed over the insulation pins to secure the board.	
5	Bearing Plate	Typical wood bearing plate

Note: 1 designates properties for ROCKWOOL COMFORTBOARD™ 80, 2 designates properties for ROCKWOOL COMFORTBOARD™ 110