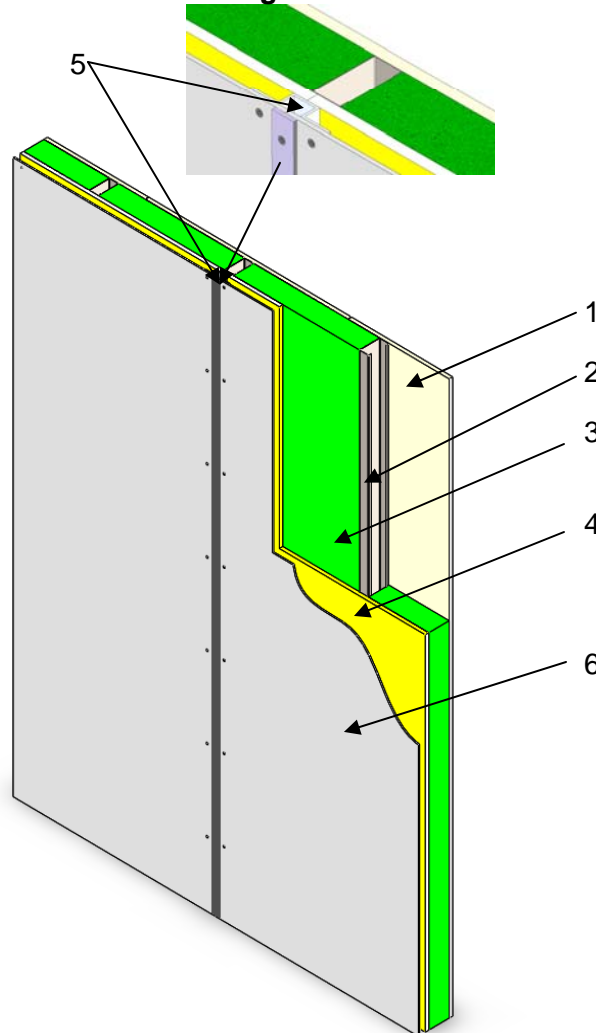


QAI Design B1062-1 Kovabond – 119
ASTM E119 – 1 Hour-Non-load Bearing Fire-Resistance-Rated Construction



No.	COMPONENT	DESCRIPTION
1	Interior Sheathing	Single layer of 5/8 inch thickness Type X gypsum wallboard complying with ASTM C1396 and listed by an approved agency. Sheathing is to be fastened to studs with 1-1/4 inch length #6 Type S screws spaced at 8 inches on center around the perimeter, and 12 inch on center spacing in the field. Joints to be taped and mudded, and fastener heads.
2	Studs	Minimum 18 gauge, 3-5/8 inch depth steel studs spaced at maximum 24 inches on center spacing.
3	Insulation	Minimum 3 inches thickness, 2.5 lbs/ft ³ density mineral wool insulation.
4	Exterior Sheathing	Single layer of 5/8 inch thickness DensGlass Gold exterior gypsum sheathing applied horizontally, and fastened with 1-1/4 inch length #6 Type S screws spaced at 8 inches on center around the perimeter, and 12 inch on center spacing in the field. Joints of the exterior gypsum are to be staggered from the interior gypsum by minimum 1 stud cavity.
5	Vertical Extrusions	Kovach manufactured aluminum hat channel spaced at maximum 30-1/8 inches on center, mechanically secured to the underlying exterior gypsum with #12-14 x1-1/2 inch fasteners spaced 24 inches on center vertically.
6	Exterior Cladding	Kovabond 6 mm Fire Retardant Aluminum Composite Panels. These panels are installed with CPS system #12-16x1 inch Torx head stainless steel fasteners, spaced 20 inches on center at minimum 1-14 inch from panel edge, anchored to the vertical extrusions noted.