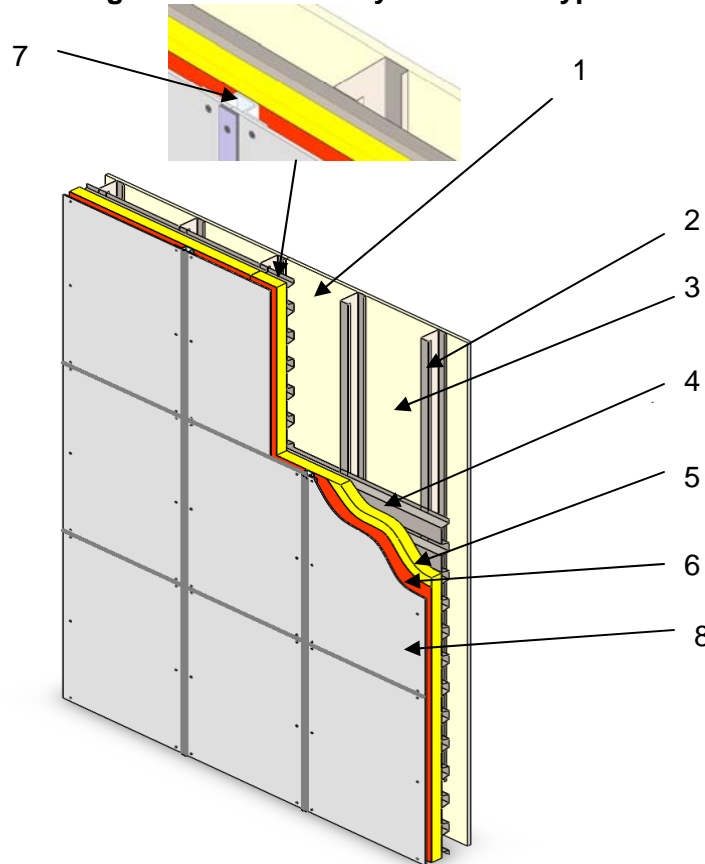


QAI Design B1062-1 Kovabond – 285
NFPA 285 Non-load Bearing Exterior Assembly for Use in Types I – IV Construction



No.	COMPONENT	DESCRIPTION
1	Interior Sheathing	5/8 inch thickness Type X gypsum wallboard complying with ASTM C1396 and listed by an approved agency, taped and mudded. Sheathing is to be fastened to studs in accordance with the applicable code.
2	Studs	Minimum 3-5/8 inch depth steel studs, designed and installed in accordance with local authorities having jurisdiction for the intended end use applications. Requires minimum 4 inch thick, 4 lbs/ft ³ density mineral wool friction fit and held with Z-clips at floor line as fire blocking.
3	Insulation (Not Shown) (Optional)	Non-combustible insulation permitted.
4	Steel-Deck	1-1/2 inch depth steel fluted B-Deck, oriented horizontally or vertically. B-Deck secured with #12 – 14 x 1-in. hex head fasteners at alternating low flute points where studs were crossed, or installed as required to meet the required service loads where approved by authorities having jurisdictions or a registered design professional.
5	Continuous Insulation	Maximum 2 inch thick, HP-13 H-Shield-CG polyisocyanurate insulation by Hunter Panels. Continuous insulation is to be secured with eight #10 x 4-1/2 inch bugle head sharp point fasteners with a 3 inch diameter metal insulation plate per insulation sheet. The fasteners are to be anchored to the Steel Deck noted above.
6	Weather Resistive Barrier	Single layer of peel and stick WrapShield SA® weather barrier, manufactured by VaproShield®.
7	Vertical Extrusions	Kovach manufactured aluminum hat channel spaced at maximum 32-1/2 inches on center, mechanically secured to the underlying Steel-Deck with #14-14 x4-1/2 inch fasteners spaced 24 inches on center vertically.
8	Exterior Cladding	Kovabond 6 mm Fire Retardant Aluminum Composite Panels. These panels are installed with KCP system #12-16x1 inch Torx head stainless steel fasteners, spaced 13-1/2 inches on center at minimum 1-14 inch from panel edge, anchored to the vertical extrusions noted.