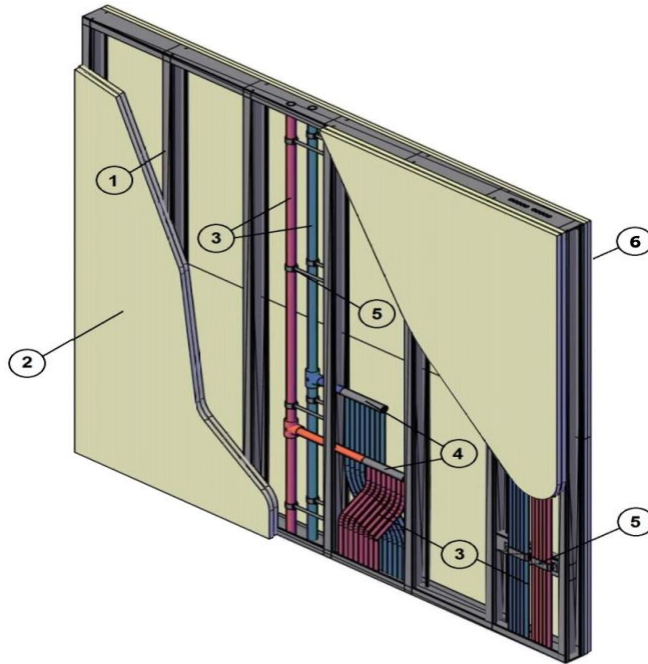


**QAI Listing P321-1G - Uponor PEX Filled Wall Assembly - UL 263, ASTM E119, CAN/ULC S101
2 Hour Fire Resistance Rated - Non-Load Bearing Wall Assembly**



No.	COMPONENT	DESCRIPTION				
1	Wall Framing	Stud Type:	Galvanized steel stud and track manufactured in conformance with ASTM C 645			
		Minimum Gauge:	25 Gauge			
		Minimum Size:	3-5/8 inch by 1-1/4 inch (92 mm x 32 mm)			
		Maximum Spacing:	24 inches (600 mm) on center (OC)			
	Installation:	Studs located Steel studs shall be fastened to the track using min. 5/16 inch (8 mm) pan or wafer head screws				
2	Gypsum Wall Board	Type:	Type X gypsum wallboard complying with ASTM C1396			
		Thickness:	Two layers of 5/8 inch (16 mm)			
		Application:	Inner Board is to be fastened to studs with 1 inch (25 mm) length #6 Type S Fine Thread screws spaced at 12 inch (305 mm) on center spacing. Outer layer joints are to be offset from inner joints. Outer Board is to be fastened to studs with 1-5/8 inch (41 mm) length #6 Type S Fine Thread screws spaced at 8 inches (200 mm) on center around the perimeter, and 12 inch (305 mm) on center spacing in the field. Joints to be taped and mudded, and fastener heads to be mudded as per CSA A82.31-M or ASTM C840 (Minimum Level 3)			
3	Non-Metallic Tubing	Certified Manufacturer:	Uponor Inc.			
		Certified Product:	AquaPEX (natural, red, blue)	Pre-Insulated AquaPEX	hePEX (natural)	RCW PEX
		Nominal Tubing Sizes:	1/2 inch to 3 inch (12 mm x 75 mm)	1/2 inch to 2 inch (12 mm x 25 mm)	1/2 inch to 4 inch (12 mm x 100 mm)	1/2 inch to 1 inch (12 mm x 25 mm)
		Installation:	Installed to a maximum of 4.85 lbs per linear feet (7.23 kg per linear meter) of cavity. Pre-Insulated AquaPEX is limited to two lengths per cavity. Tubing shall be supported on steel or wood cross-bracing spaced at maximum 48 inch (1219 mm) OC.			
4	Manifolds / Fittings	Certified Manufacturer:	Uponor Inc.			
		Certified Product:	ProPEX EP fittings			
		Installation:	Installed to a max. 3.33 lbs (1.51 kg) per cavity; ProPEX CPVC adapters installed to a maximum of 5 fittings per cavity; standard copper, brass or steel plumbing fittings.			
5	Fasteners	Certified Manufacturer:	Uponor Inc.			
		Certified Product:	PEX Rail Polyethylene (post-consumer products)			
		Installation:	Installed to a maximum of 1.53 lbs (0.70 kg) per cavity; standard copper brass or steel plumbing fasteners			
6	Gypsum Wall Board	Type:	Type X gypsum wallboard complying with ASTM C1396			
		Thickness:	Two layers of 5/8 inch (16 mm)			
		Application:	Inner Board is to be fastened to studs with 1 inch (25 mm) length #6 Type S Fine Thread screws spaced at 12 inch (305 mm) on center spacing. Outer layer joints are to be offset from inner joints. Outer Board is to be fastened to studs with 1-5/8 inch (41 mm) length #6 Type S Fine Thread screws spaced at 8 inches (200 mm) on center around the perimeter, and 12 inch (305 mm) on center spacing in the field. Joints to be taped and mudded, and fastener heads to be mudded as per CSA A82.31-M or ASTM C840 (Minimum Level 3)			