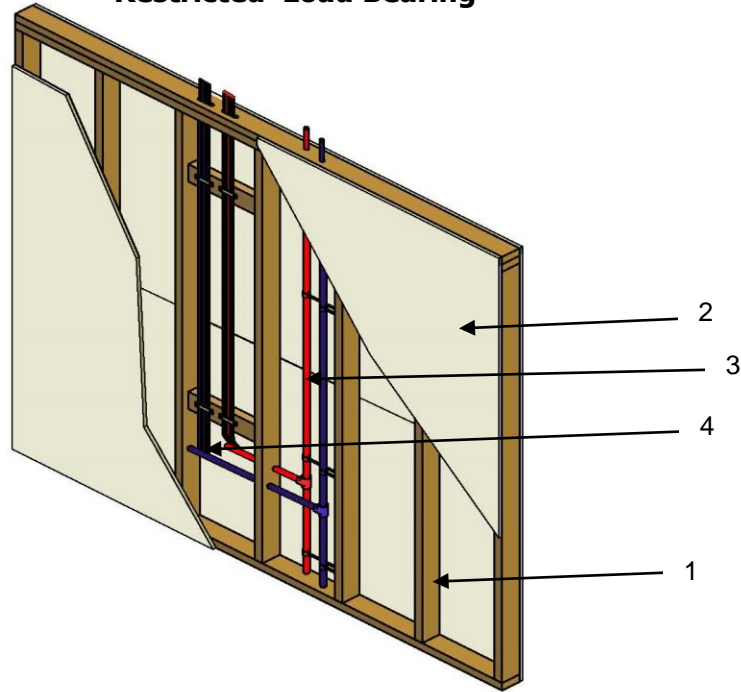


**QAI Listing P343-1B Cash Acme SharkBite PEX Wall Assembly  
 UL 263, ASTM E119, CAN/ULC S101  
 1 Hour Fire Resistance Rated Wall Assembly  
 Restricted<sup>1</sup> Load Bearing**



No.	COMPONENT	DESCRIPTION	
1	<b>Wall Framing</b>	Stud Type:	Wood
		Minimum Size:	2 inch by 6 inch (38 mm x 140 mm)
		Maximum Spacing:	16 inches (400 mm) on center (OC)
		Installation:	Cross braced at mid height of the stud and penetrations to be fire stopped at the top and bottom
2	<b>Gypsum Wall Board</b>	Type:	Type X gypsum wallboard complying with ASTM C1396
		Thickness:	Single layer of 5/8 inch (16 mm)
		Application:	Board is to be fastened to studs with 1-5/8 inch (41 mm) length #6 Type S Coarse Thread drywall screws spaced at 8 inches (200 mm) on center around the perimeter, and 12 inch (305 mm) on center spacing in the field. Joints to be taped and mudded, and fastener heads to be mudded as per CSA A82.31-M or ASTM C840 (Minimum Level 3)
3	<b>Non-Metallic Tubing</b>	Certified Manufacturer:	Cash Acme
		Certified Product:	SharkBite PEX-a or PEX-b Tubing
		Nominal Tubing Sizes:	1/2 inch to 2 inch (12 mm x 51 mm)
		Installation:	Installed to a maximum of 4.85 lbs per linear feet (7.23 kg per linear meter) of cavity. Tubing shall be supported on steel or wood cross-bracing spaced at maximum 48 inch (1219 mm) OC.. Armacell AP Armaflex pipe insulation allowed for installation to maximum density 2.64 lbs/ft (3.93 kg/m).
4	<b>Manifolds / Fittings</b>	Certified Manufacturer:	Cash Acme
		Certified Product:	EvoPEX Universal, 2XL, 2XLR, Plastic Crimp (Barb) and Brass Crimp (Barb), Standard Copper Brass or Steel Fittings.
		Installation:	Installed to a max. 4.82 lbs (2.19 kg) per cavity.

<b>5</b>	<b>Fasteners (not shown)</b>	Product(s):	Steel straps, Hangerloc nylon straps, or Oatey Half Talon pipe clamps
		Max. Spacing:	48 in. (1219 mm)

\*Restricted-Load Bearing – Load rating for this assembly was calculated using the Working Stress Design Method. For jurisdictions employing the Limit States Design Method such as Canada, a load restriction factor shall be used.

Visit the QAI Online Listing Directory located at [www.qai.org](http://www.qai.org) for the most up to date version of this Listing and to validate that this QAI Listing is active.