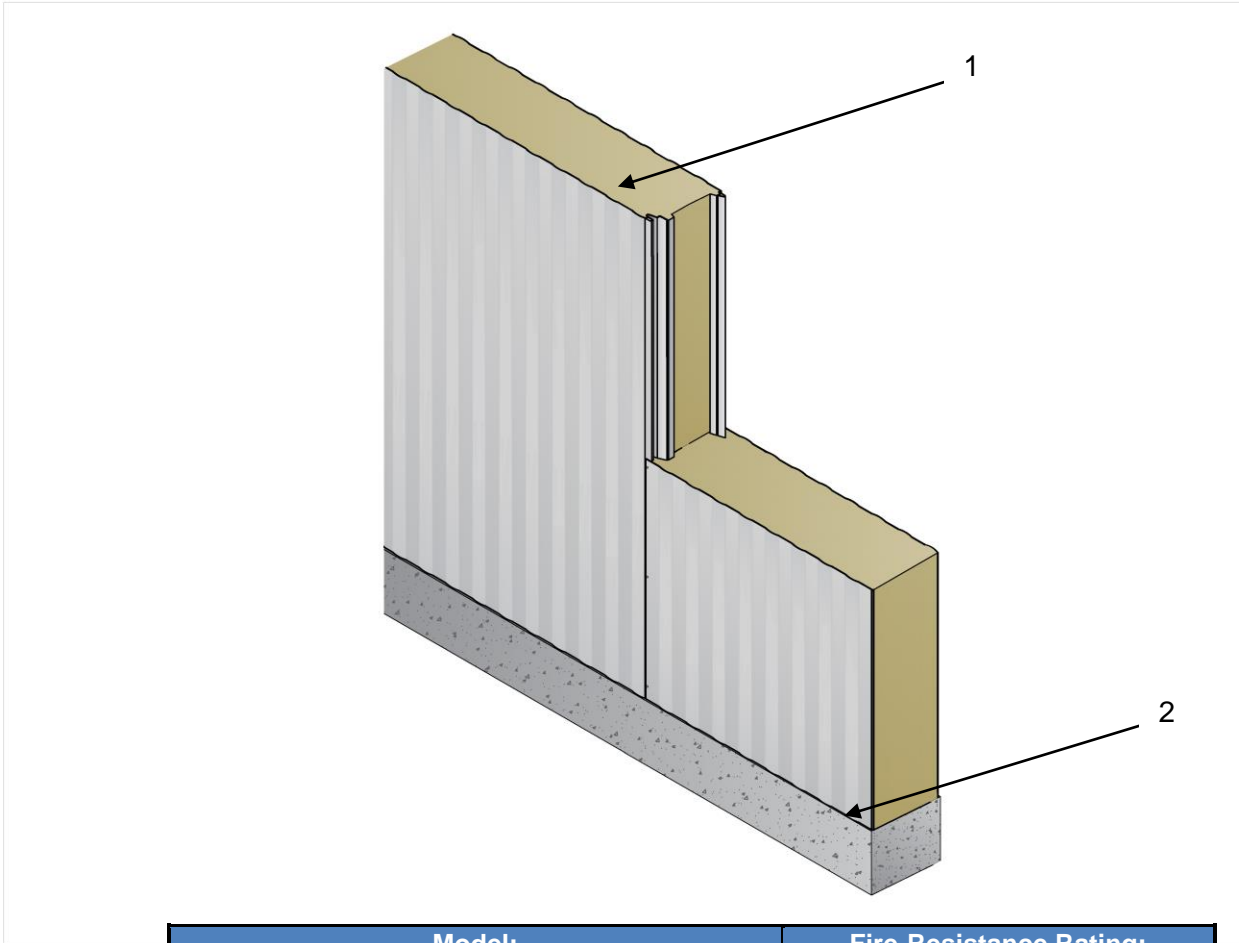




**QAI Design B1096-2a –Norbec NOROC-L Mineral Wool Insulated Metal Panel
CAN/ULC-S101/ASTM E119 - Non-Load Bearing Fire-Resistance Rated Wall Assemblies**



Model:	Fire-Resistance Rating:
100 mm (4 Inches) NOROC-L	45 min
126 mm (5 Inches) NOROC-L	1 hour
152 mm (6 Inches) NOROC-L	2 hours
203 mm (8 Inches) NOROC-L	3 hours



NUMBER	PART	DESCRIPTION	
1	Wall Panel	Manufacturer:	Norbec Architectural Inc.
		Approved Product(s):	NOROC-L Mineral Wool Core Insulated Metal Panels.
		Facers:	Minimum 0.404 mm (26 Gauge) steel.
		Core	Non-combustible mineral wool core, available in thicknesses as noted.
		Joint	Female / Male connection. Joint treatment requirements are as outlined:
	100 mm (4 inch) NOROC-L 45-minute Assembly:	<p>Building Envelope Application with Interior Side Exposure to Fire: Interior joints sealed with butyl caulking along female halves of joint. Optional, exterior joint sealed with butyl caulking g along female halves of joint. Optional, silicone caulking applied to the interior joint after panel installation.</p> <p>Interior Partition Application with Either Side Exposure to Fire: Optional, both joints sealed with butyl caulking along female halves of joint, Optional, silicone caulking applied to joint after panel installation.</p> <p>Panels require fasteners at top and bottom of panel through joint into structure at minimum. Intermediate fasteners along top and bottom of panel to be applied as required by Authority Having Jurisdiction, Design Engineer, or site requirements.</p>	
	127 mm (5 inch) NOROC-L 1-hour Assembly:	<p>Building Envelope Application with Interior Side Exposure to Fire: Interior joints sealed with butyl caulking along female halves of joint. Optional, exterior joint sealed with butyl caulking g along female halves of joint. Optional, silicone caulking applied to the interior joint after panel installation.</p> <p>Interior Partition Application with Either Side Exposure to Fire: Optional, both joints sealed with butyl caulking along female halves of joint, Optional, silicone caulking applied to joint after panel installation.</p> <p>Panels require fasteners at top and bottom of panel through joint into structure at minimum. Intermediate fasteners along top and bottom of panel to be applied as required by Authority Having Jurisdiction, Design Engineer, or site requirements.</p>	
	152 mm (6 inch) NOROC-L 2-hour Assembly:	<p>Building Envelope Application with Interior Side Exposure to Fire: Interior joints sealed with butyl caulking along female halves of joint. Optional, exterior joint sealed with butyl caulking g along female halves of joint. Optional, silicone caulking applied to the interior joint after panel installation.</p> <p>Interior Partition Application with Either Side Exposure to Fire: Optional, both joints sealed with butyl caulking along female halves of joint, Optional, silicone caulking applied to joint after panel installation.</p> <p>Panels require fasteners at top and bottom of panel through joint into structure at minimum. Intermediate fasteners along top and bottom of panel to be applied as required by Authority Having Jurisdiction, Design Engineer, or site requirements.</p>	
	203 mm (8 inch) NOROC-L 3-hour Assembly:	<p>Building Envelope Application with Interior Side Exposure to Fire: Interior joints sealed with butyl caulking along female halves of joint. Optional, exterior joint sealed with butyl caulking g along female halves of joint. Optional, silicone caulking applied to the interior joint after panel installation.</p> <p>Interior Partition Application with Either Side Exposure to Fire: The exterior side of joint, as defined by the manufacturer must have 13 mm diameter x 51 mm length (1/2 inch x 2 inches) self-drilling screws stitching the steel face every 305 mm (12 inches) on center, along the joint connecting the two adjacent panels. Optional, both joints sealed with butyl caulking along female halves of joint, Optional, silicone caulking applied to joint after panel installation.</p> <p>Panels require fasteners at top and bottom of panel through joint into structure at minimum. Intermediate fasteners along top and bottom of panel to be applied as required by Authority Having Jurisdiction, Design Engineer, or site requirements.</p>	
2	Supports / End Flashing	General:	<p>Flashing or support to be installed per Norbec Architectural's installation instructions. Supports to be competent to allow connection of panel with fastener connections to substructure per Authority Having Jurisdiction, Design Engineer, or site requirements. Minimum 1 fastener at top and bottom of panel joint connecting steel facer to structure required.</p>

Note: Wind resistance and seismic considerations are outside the scope of QAI listing.