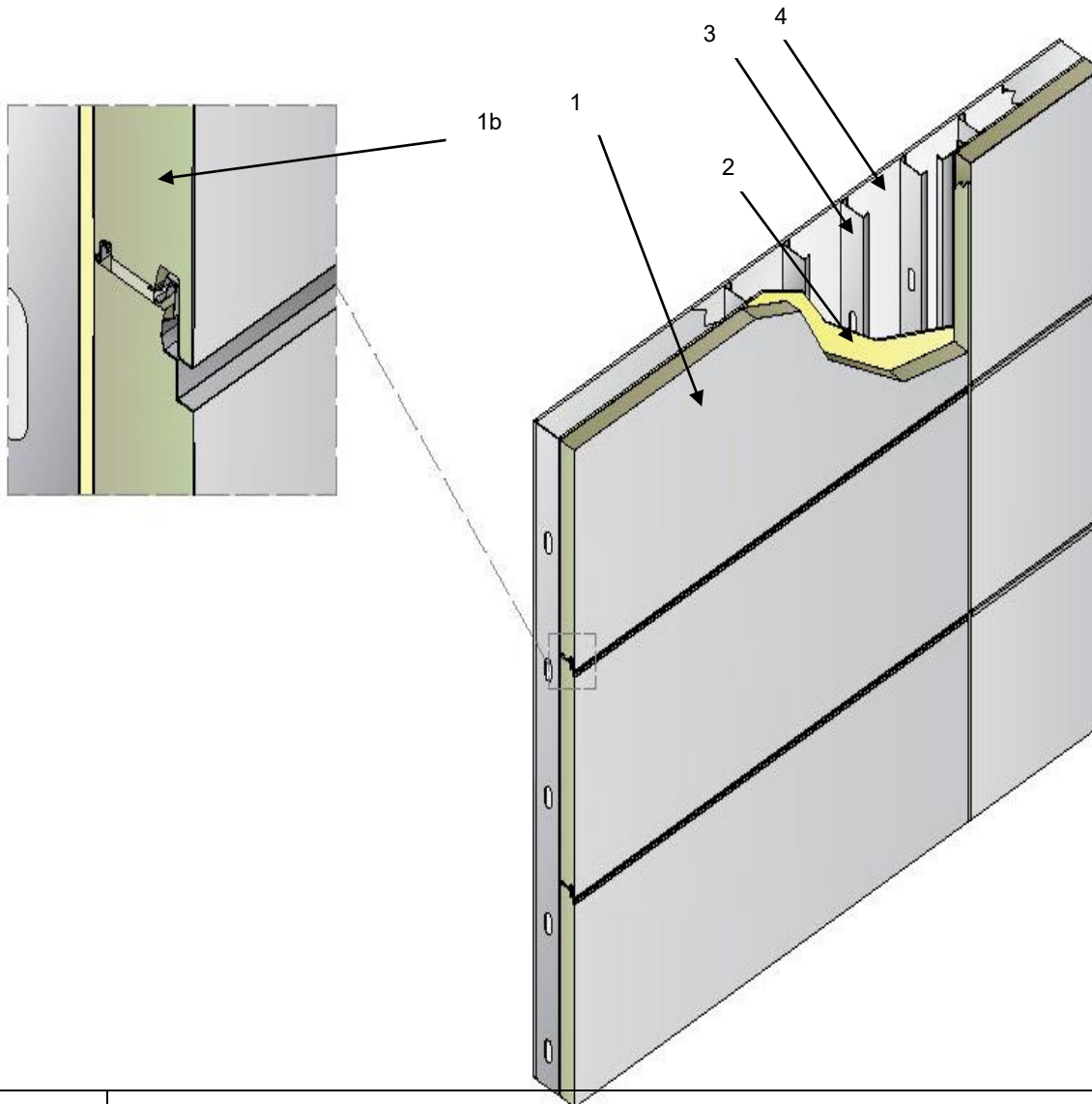


**QAI Design B1124-1a –Duowei Glass & Rock Sandwich Panel System Insulated Metal Panels
 CAN/ULC-S101 – 1 Hour Non-Load Bearing Fire-Resistance Rated – Interior Facing Fire
 ASTM E283 / ASTM E331 Building Envelope – Air Barrier, Water Penetration Resistance**



Item	COMPONENT	DESCRIPTION	
1	Exterior Cladding	Type:	Duowei Insulated Metal Panel (IMP)
		Thickness:	75 mm – 150 mm (3 inches – 6 inches).
		Installation:	Duowei IMP tongue and groove between panel joints require 19 mm x 50 mm (3/4 inch x 2 inch) mineral wool strips placed between panel joints, compressed during installation to fill between panel gaps. Panel butt joints require mineral wool batt backing of 75 mm (3 inches) dept packed into joint, following a foam backer rod was 13 mm (1/2 inches) depth was installed on the exterior joint cavity for exterior grade silicone sealant application. Panels can be installed horizontally or vertically, where joints are treated as noted above. Panels require anchoring with concealed fasteners, spaced in accordance with engineering design to resist anticipated service loads, with spacing to be maximum 405 mm (16 inches) on center.
1b	Mineral Wood Core	Density:	Minimum 120 kg/m ³ nominal density, 100 mm – 150 mm (4 inches to 6 inches) thickness.
		Classification:	Classified non-combustible per CAN/ULC S114.

2	Exterior Sheathing	Type:	Exterior Gypsum complying with ASTM C1177 Type X, listed by an approved agency.
		Thickness:	Minimum 13 mm (1/2 inch).
		Installation:	Installation into underlying steel framing with minimum #6 32 mm (1-1/4 inches) length Type S drywall screws at 305 mm (12 inches) on center around the perimeter and in the field.
3	Framing	Type:	Steel framing of minimum 18 Gauge, complying with the applicable code.
		Depth:	Minimum 152 mm (6-inches) depth.
		Installation:	Installed at maximum 405 mm (16 inches) on center spacing.
4	Interior Sheathing	Type:	Gypsum complying with ASTM C1396 Type X, listed by an approved agency.
		Thickness:	Minimum 16 mm (5/8 inch).
		Installation:	Installation into underlying steel framing with minimum #6 32 mm (1-1/4 inches) length Type S drywall screws at 203 mm (8-inches) on center around the perimeter and 305 mm (12 inches) in the field. Joints and fastener heads require tapping and mudding with minimum Level 2 finish per ASTM C840.
5	Optional Insulation (Not Shown)	Type:	Non-combustible Type: Fiberglass batt, Mineral wool..
		Specifications:	Insulation is to comply with the applicable code, including classification as non-combustible per CAN/ULC S114.
		Installation:	Insulation is to be friction fit between studs, ensuring no outward pressure is exerted on gypsum board after installation.

Note: Wind resistance and seismic considerations are outside the scope of QAI listing.